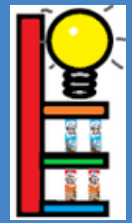
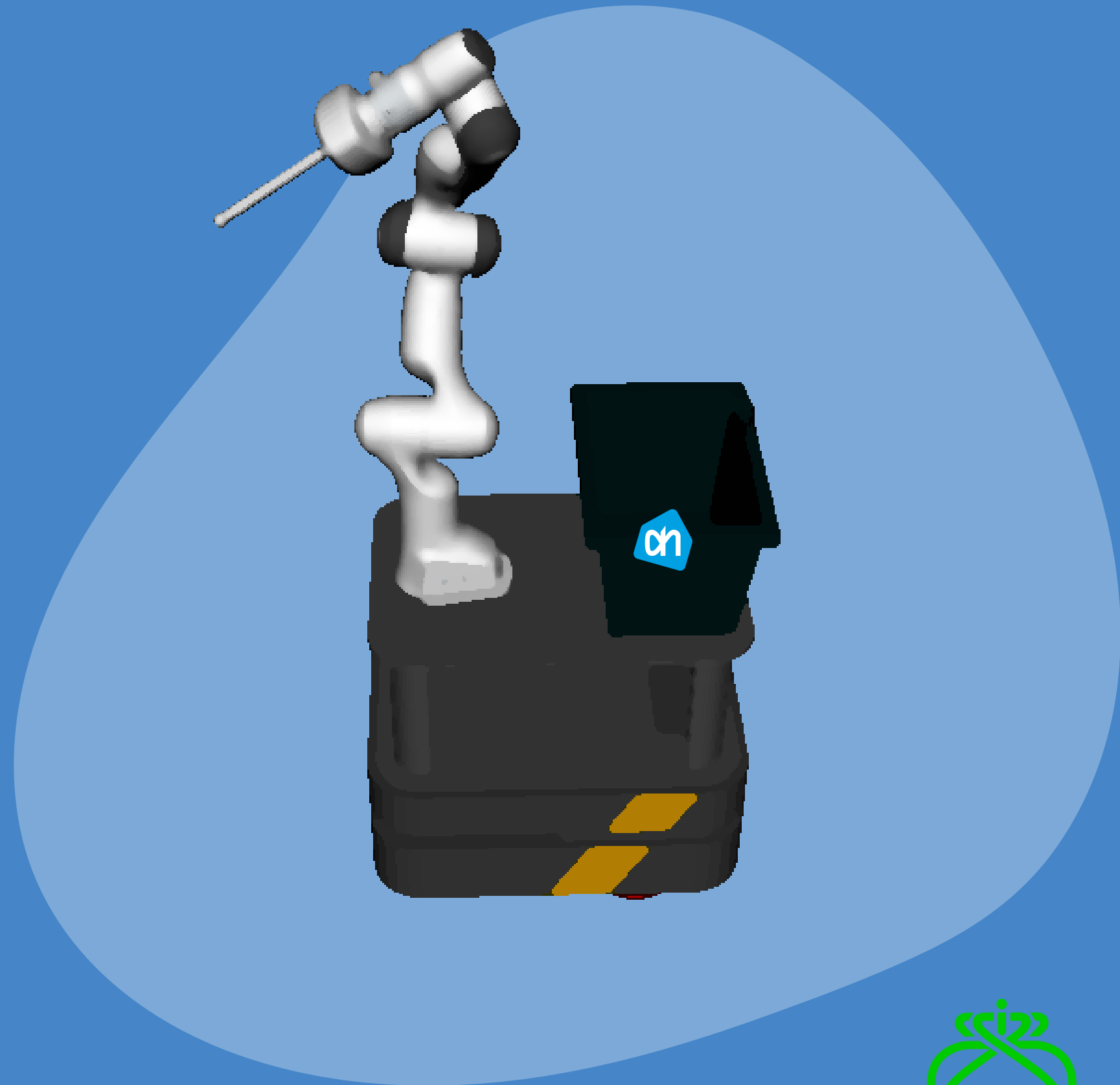


Ahold Delhaize

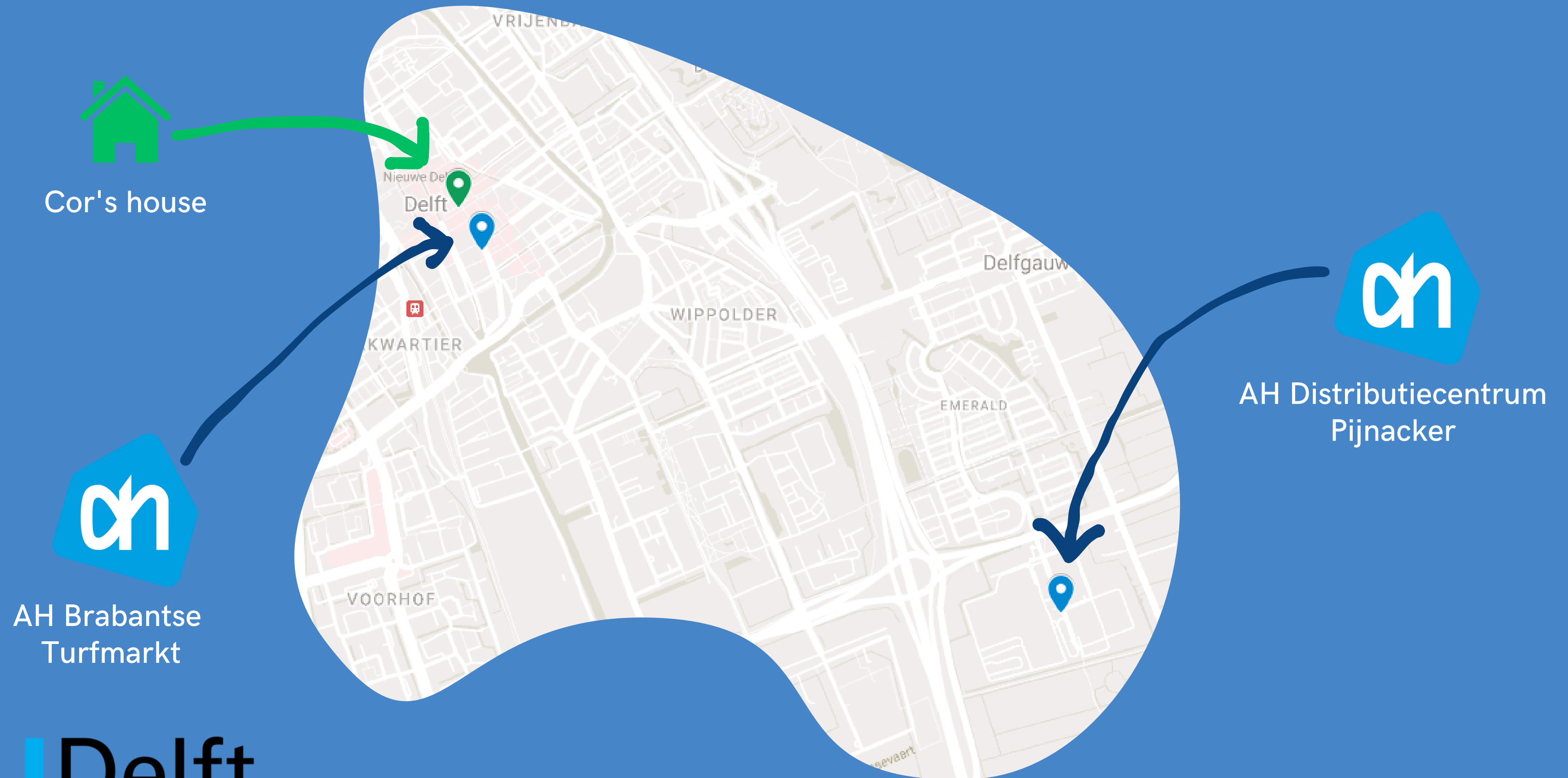


SmartShelf Engineers (Group 20)

Marijn de Rijk
Ernst Cancrinus
Stan Vijverberg
Henk Jekel
Kenny Brandon

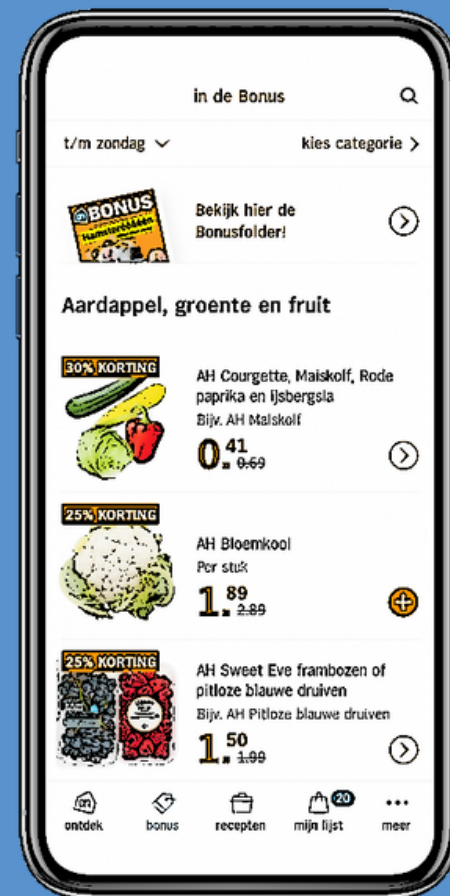


The Problem

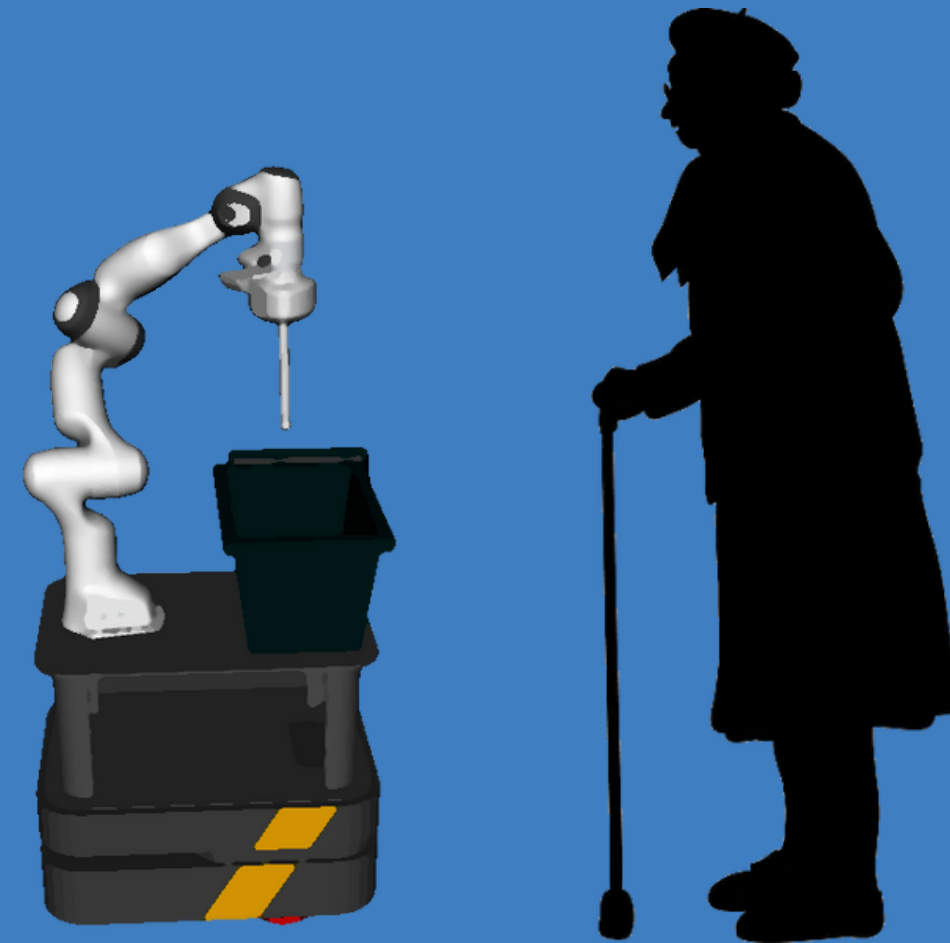


The Problem

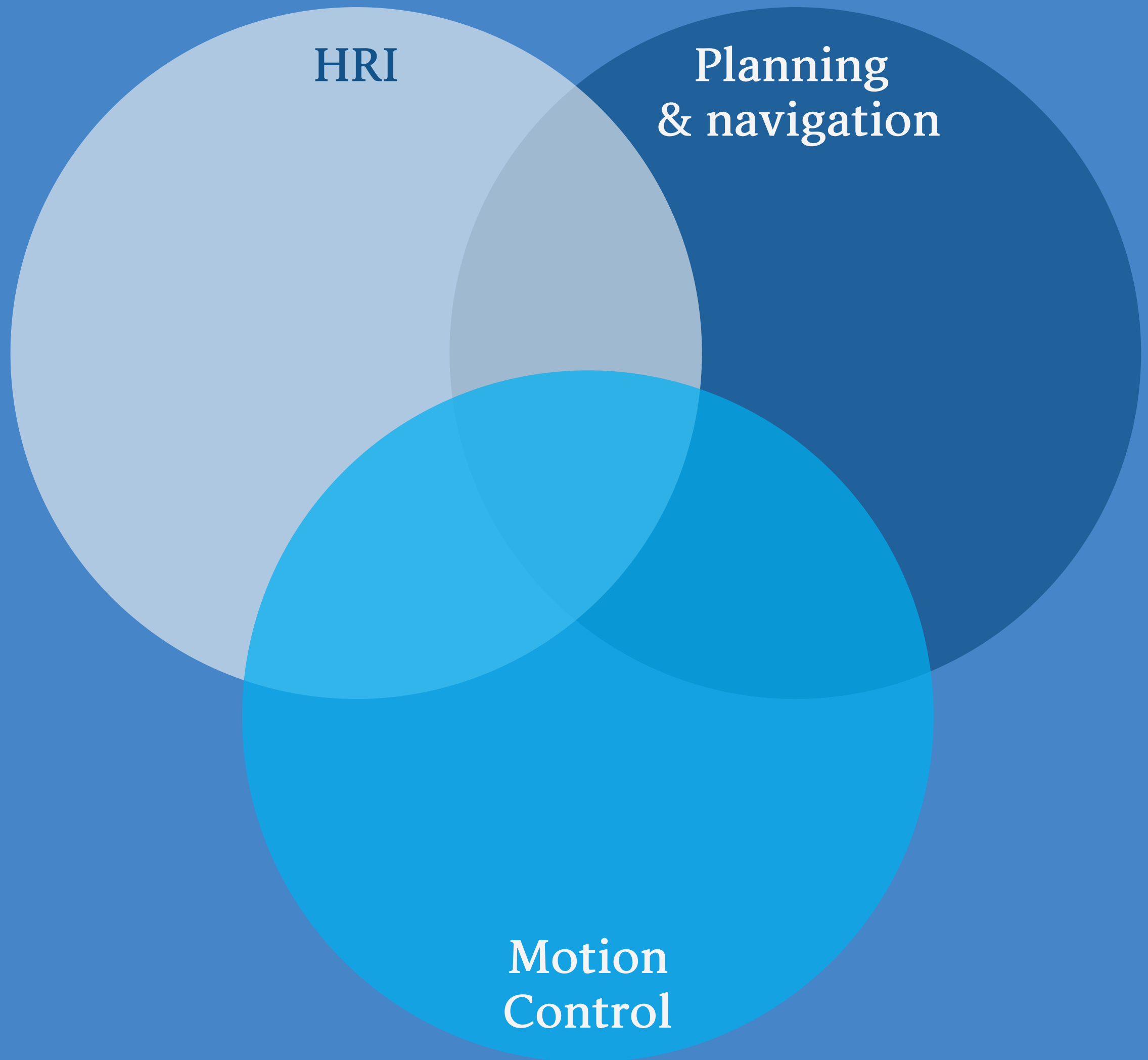
Online



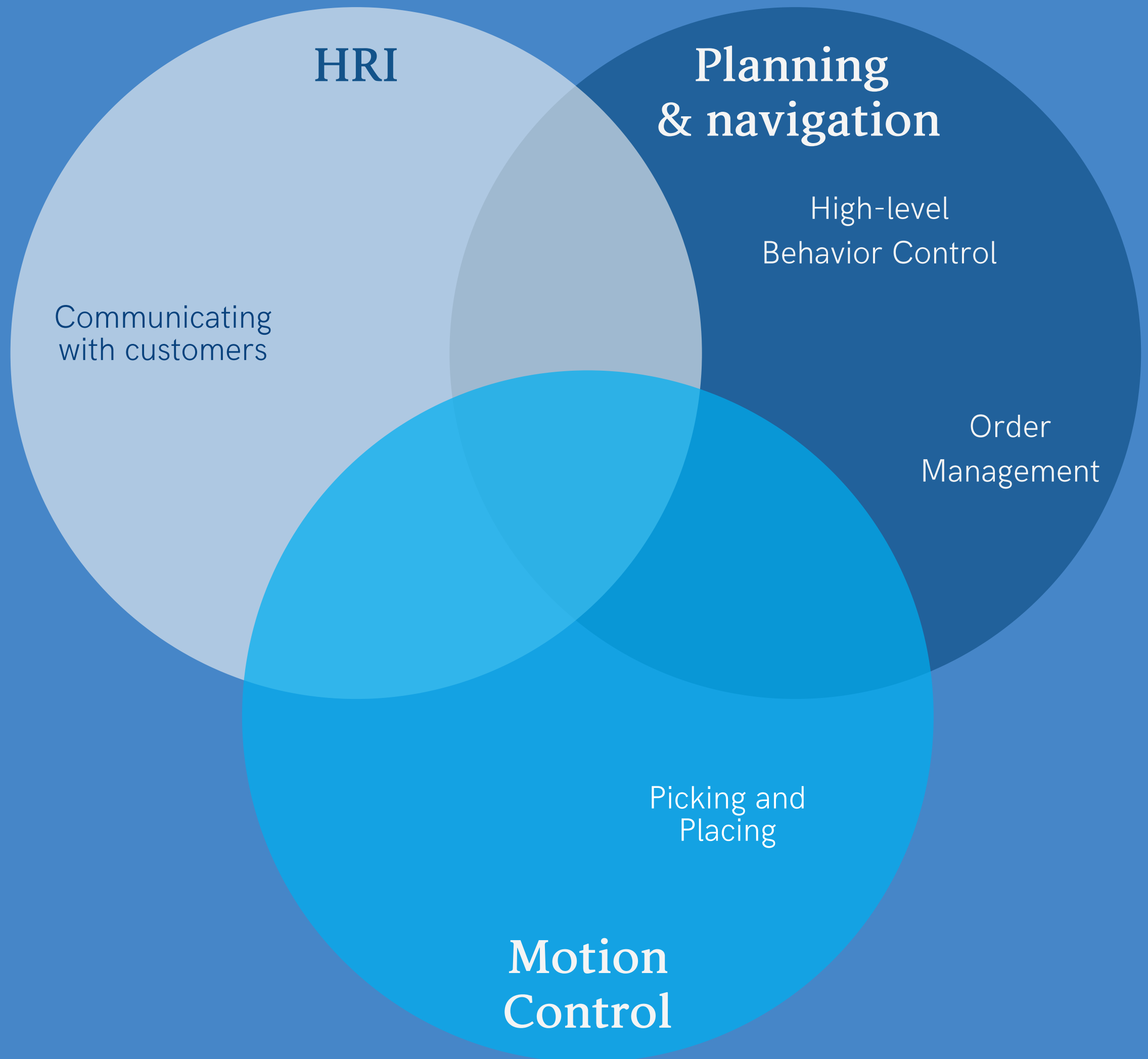
In-Store



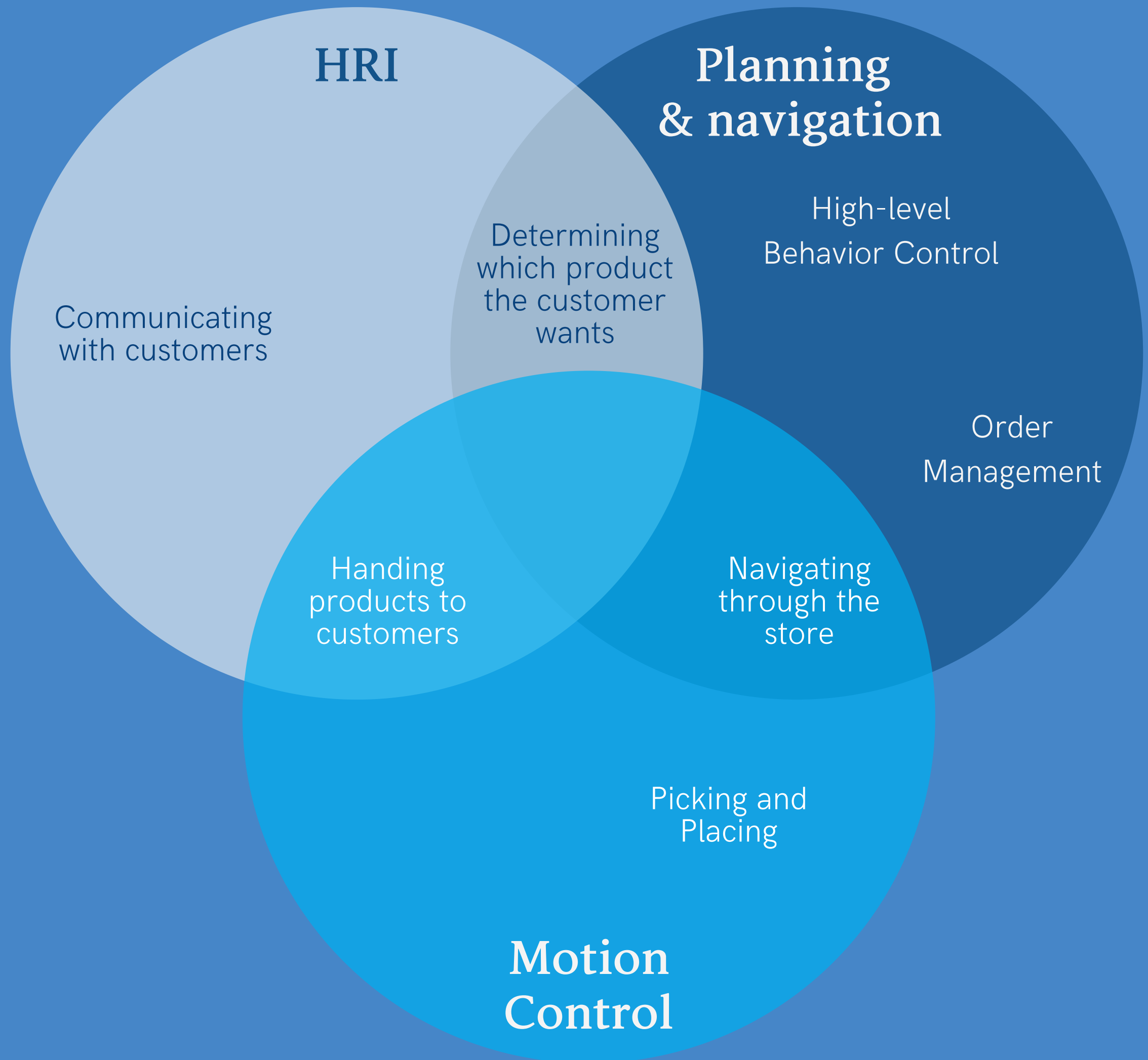
System Requirements



System Requirements



System Requirements



Design choices



Order handling system

Used to process order requests from online and in-store customers.

Design choices



Order handling system

Used to process order requests from online and in-store customers.



Voice request system

Allows customer to request picking assistance through voice interaction with Albert.

Design choices



Order handling system

Used to process order requests from online and in-store customers.



Voice request system

Allows customer to request picking assistance through voice interaction with Albert.



FlexBE

Full behavior model for the robot to execute its tasks autonomously.

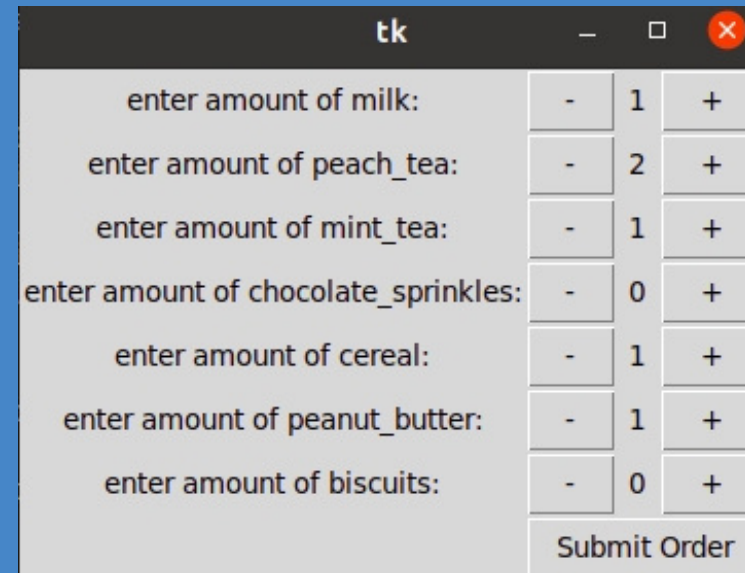
Video demonstration



Order handling system

Online & in-store customers

GUI for products and quantities



Label	Minus	Value	Plus
enter amount of milk:	-	1	+
enter amount of peach_tea:	-	2	+
enter amount of mint_tea:	-	1	+
enter amount of chocolate_sprinkles:	-	0	+
enter amount of cereal:	-	1	+
enter amount of peanut_butter:	-	1	+
enter amount of biscuits:	-	0	+
Submit Order			

```
order list
Product      Location      Order ID      Request type
-----
milk         shelf_1       0             0
peach_tea    shelf_2       0             0
peach_tea    shelf_2       0             0
mint_tea     shelf_2       0             0
cereal       shelf_4       0             0
peanut_butter shelf_4       0             0
base_station base_station  100           3
chocolate_sprinkles shelf_3       1             0
cereal       shelf_4       1             0
peanut_butter shelf_4       1             0
biscuits     shelf_3       1             0
base_station base_station  100           3
```

Video demonstration



Order handling system

Online & in-store customers

GUI for products and quantities

tk			
enter amount of milk:	-	1	+
enter amount of peach_tea:	-	2	+
enter amount of mint_tea:	-	1	+
enter amount of chocolate_sprinkles:	-	0	+
enter amount of cereal:	-	1	+
enter amount of peanut_butter:	-	1	+
enter amount of biscuits:	-	0	+
Submit Order			

order list			
Product	Location	Order ID	Request type
milk	shelf_1	0	0
peach_tea	shelf_2	0	0
peach_tea	shelf_2	0	0
mint_tea	shelf_2	0	0
cereal	shelf_4	0	0
peanut_butter	shelf_4	0	0
base_station	base_station	100	3
chocolate_sprinkles	shelf_3	1	0
cereal	shelf_4	1	0
peanut_butter	shelf_4	1	0
biscuits	shelf_3	1	0
base_station	base_station	100	3



Scan shelf

Video demonstration



Voice request system



ChatGPT API



Google text to speech



Google speech recognition



Product database integration



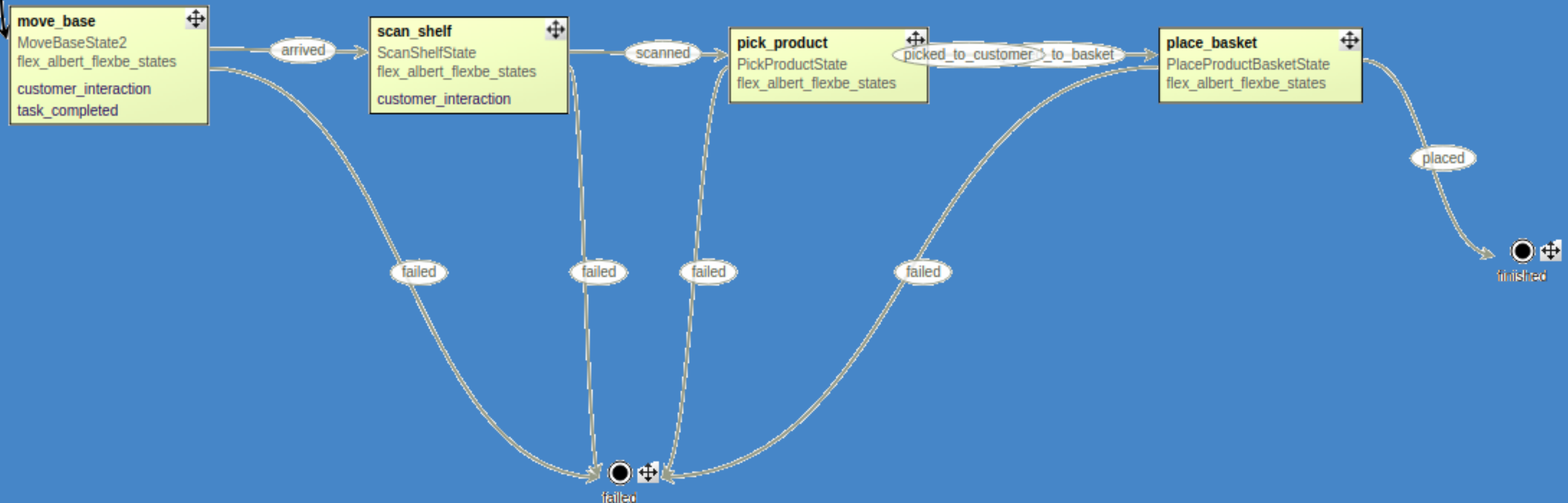
Hey Albert

Architecture

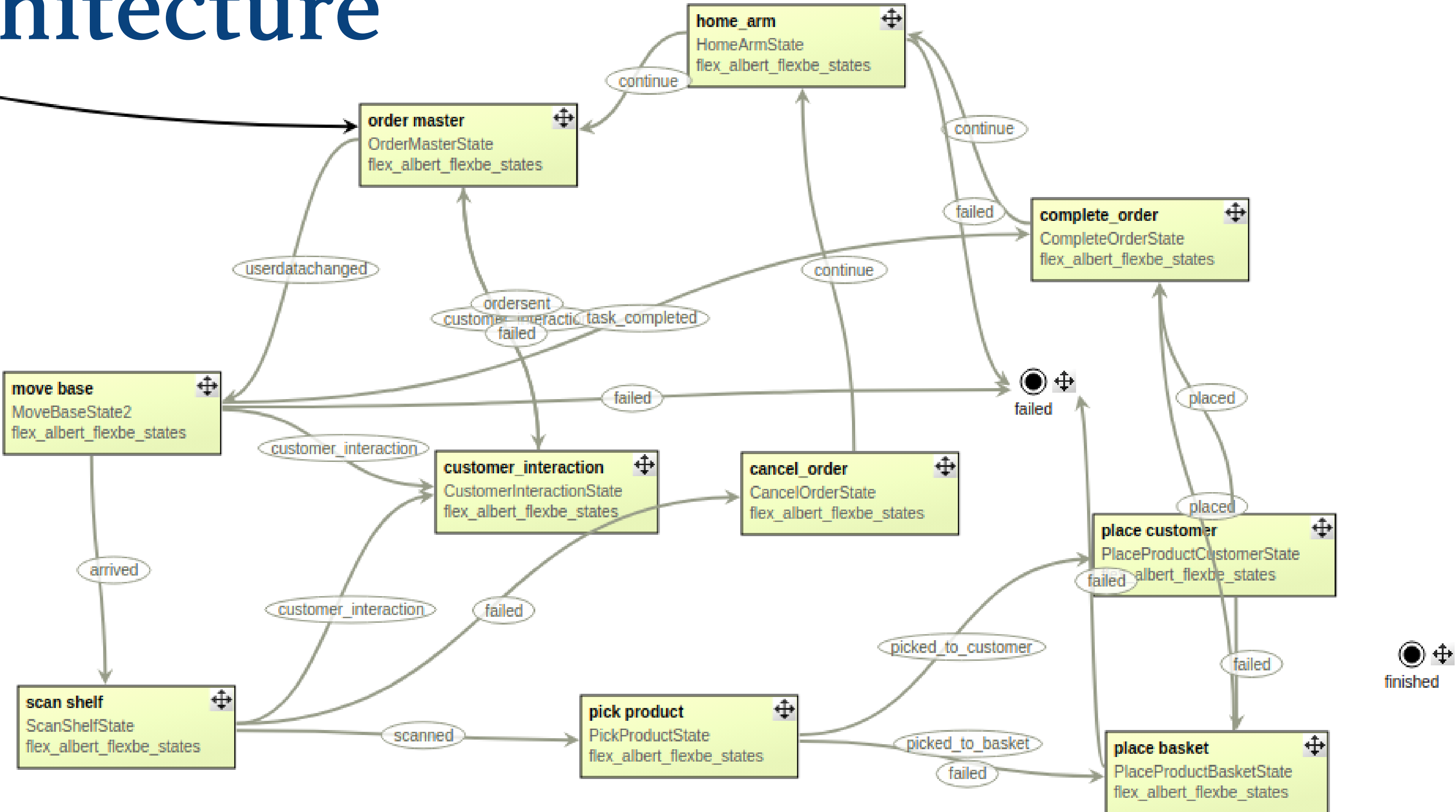


FlexBE behavior engine

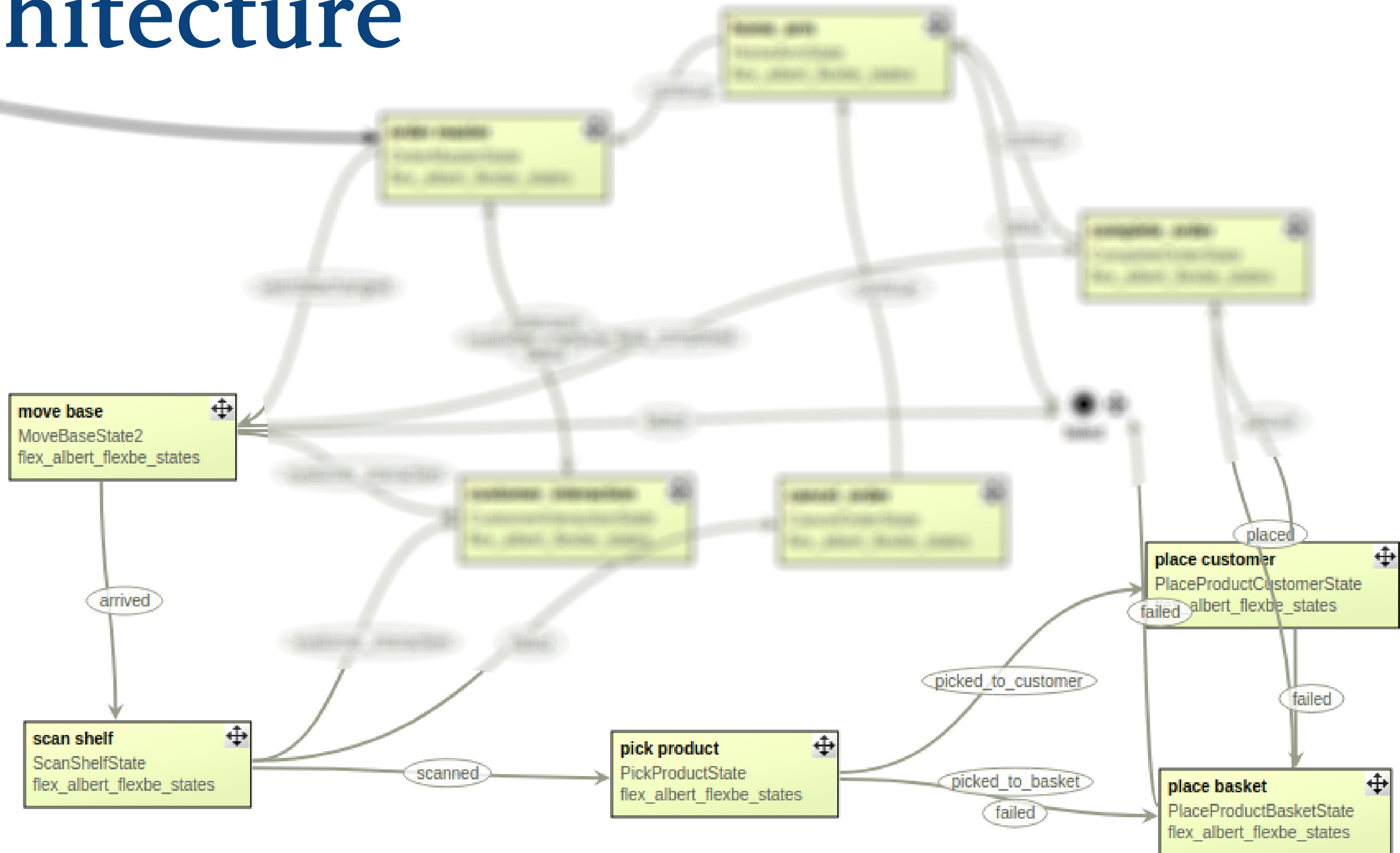
- Monitoring
- GUI
- Live adjustments



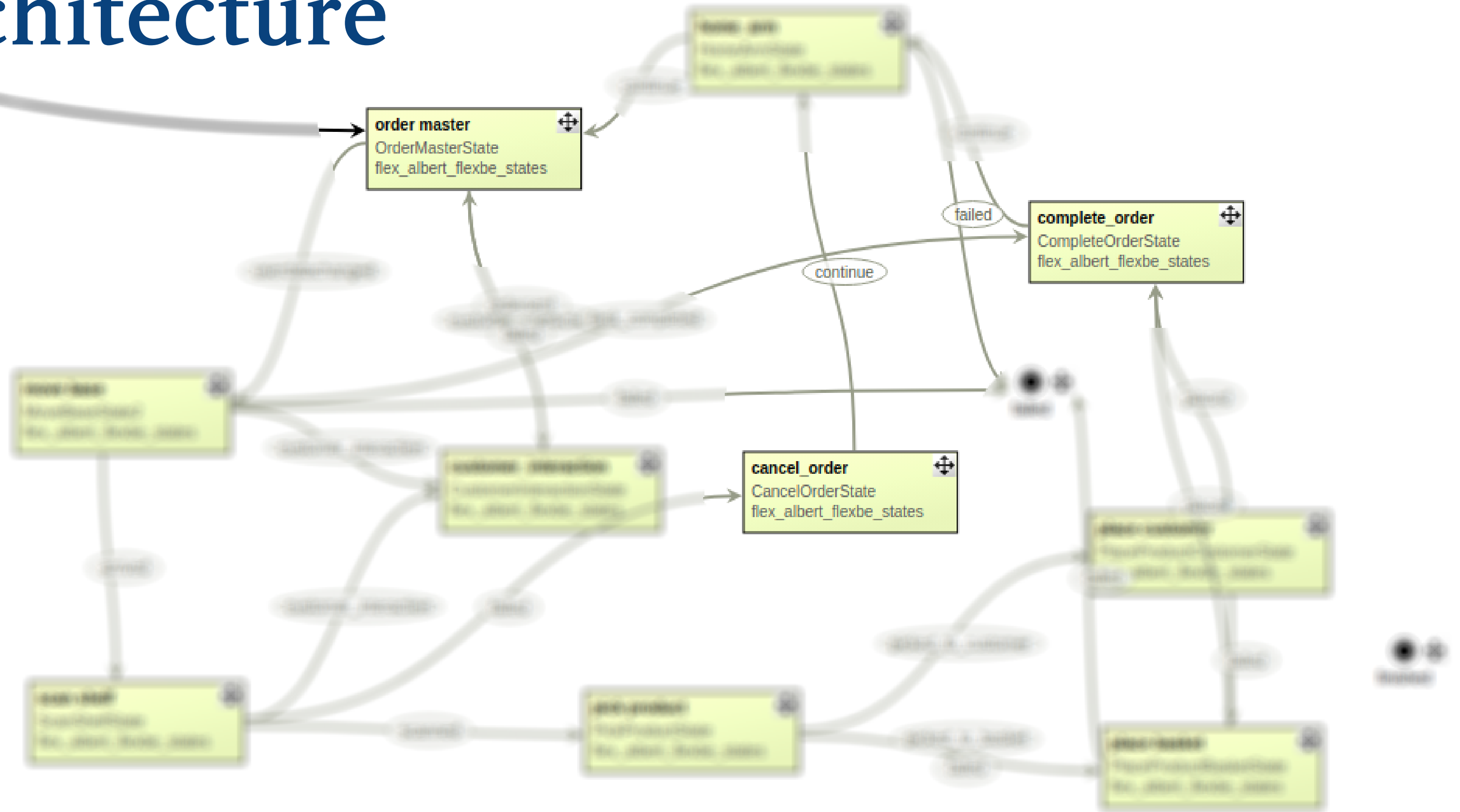
Architecture



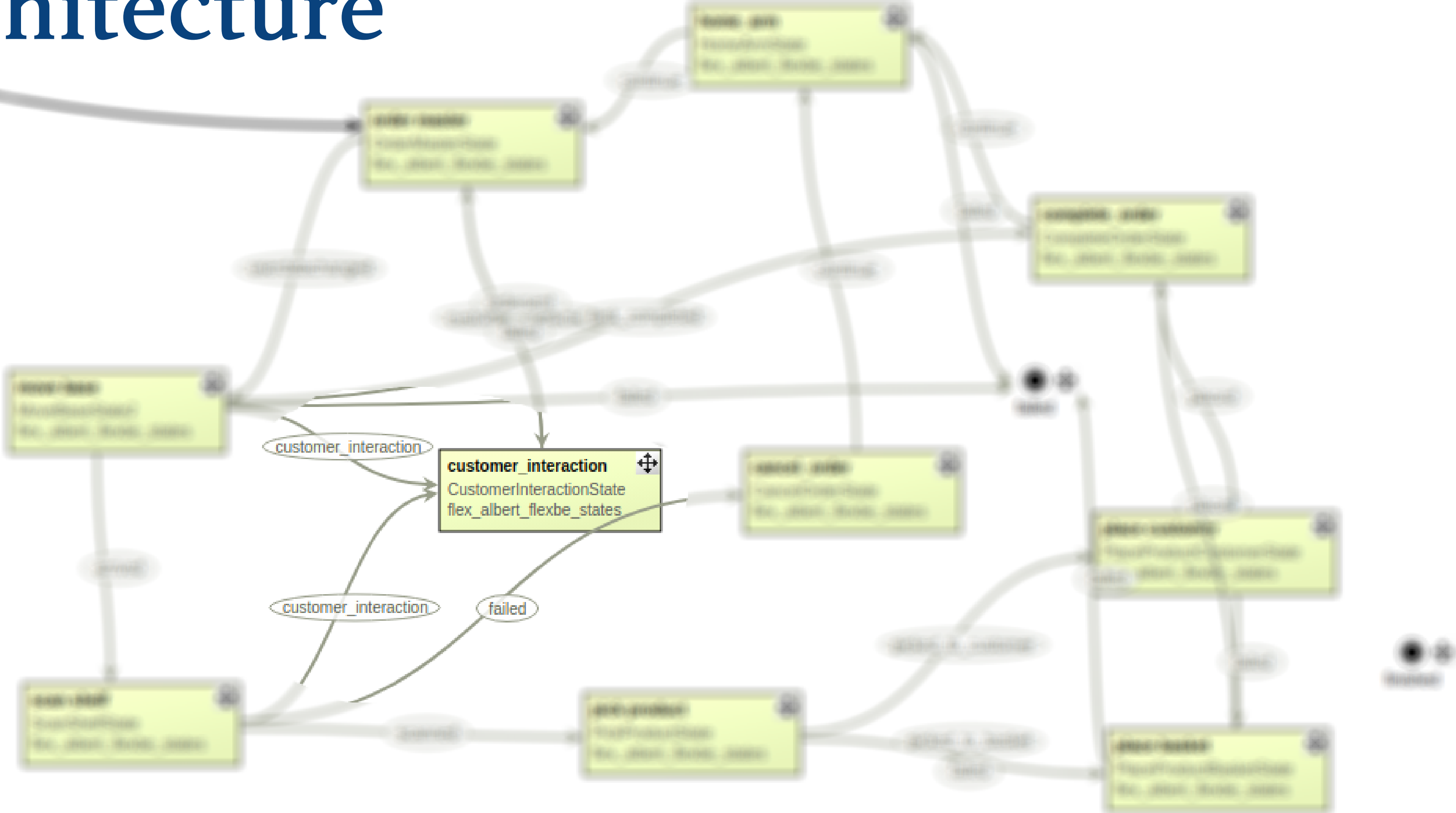
Architecture



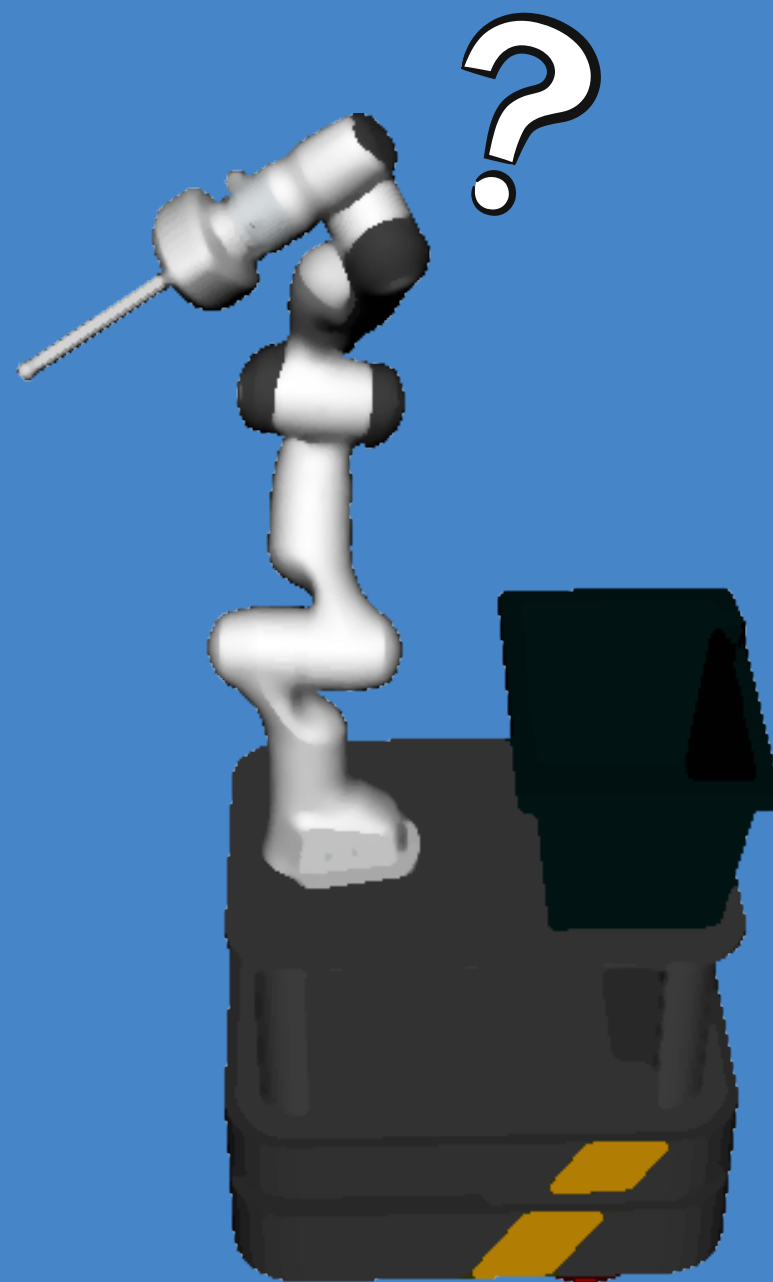
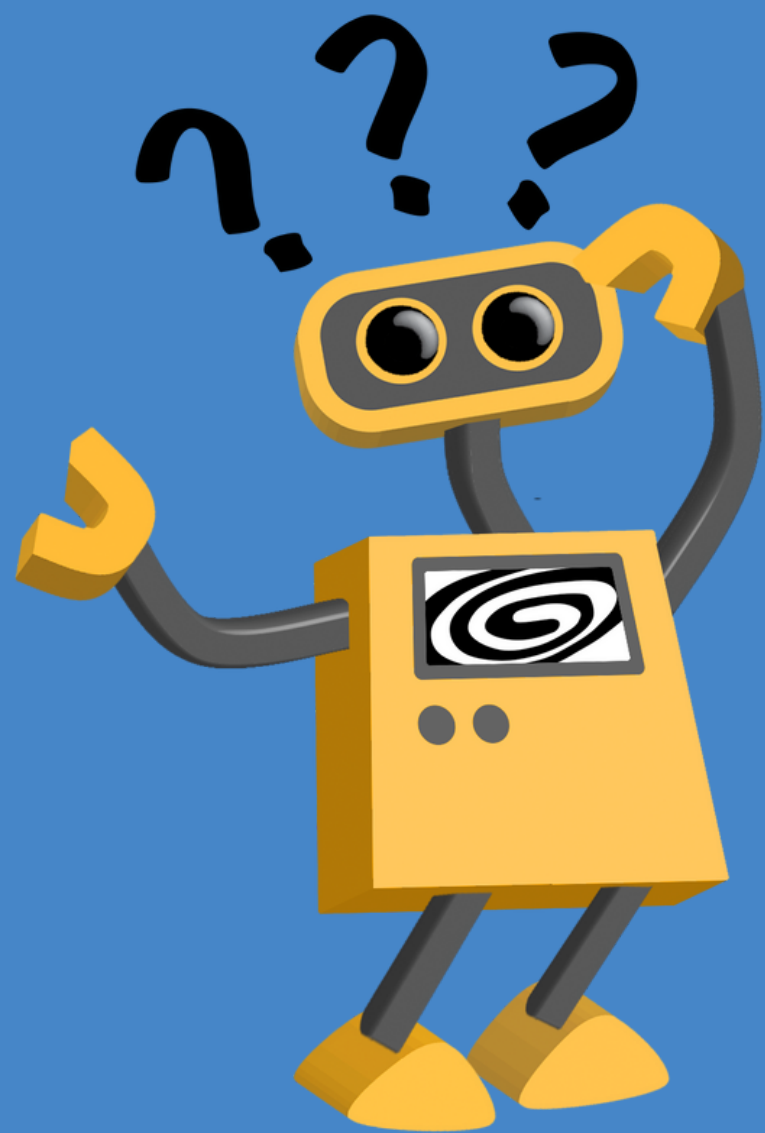
Architecture



Architecture

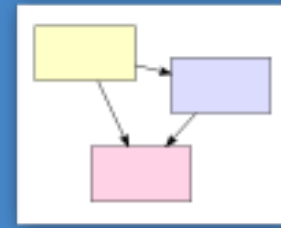


Questions?



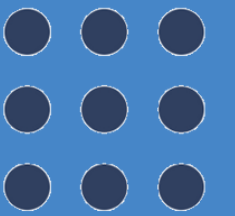
Supplementary Slides

Software



FlexBE

ros/**actionlib**



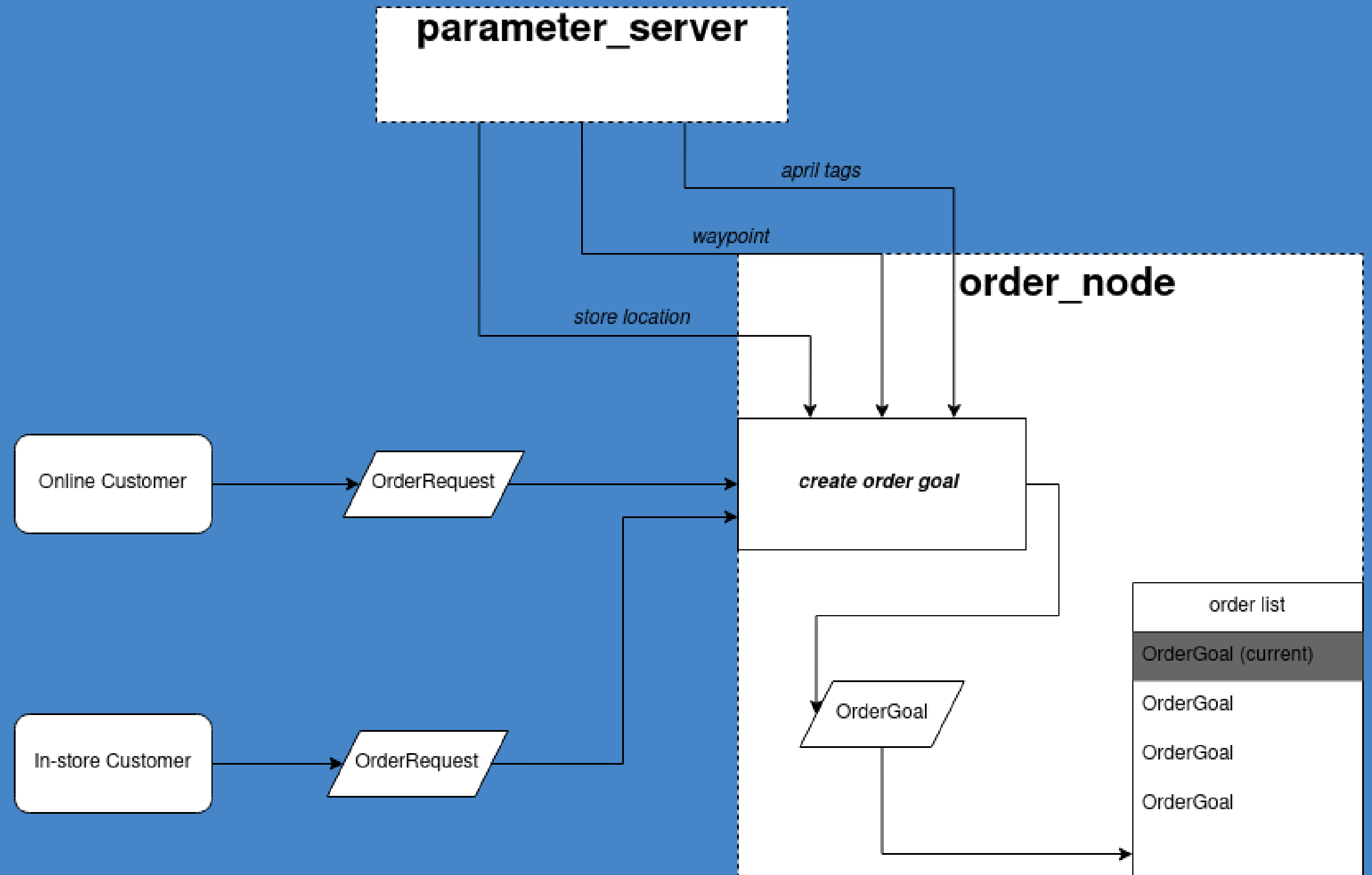
Google Cloud



ChatGPT
API

Supplimentary Slides

Order Package



Supplimentary Slides

Voice Interaction Package

